

Richard Lloyd

Epiphany Responsory

for tenors and basses (or cantor)
mixed voices and organ

ENCÔRE
publications

Also available by Richard Lloyd

A GARLAND OF PRAISE
for SATB

DURHAM SERVICE
Evening Service for SATB and organ

THE FAIREST FLOWER
carol for SATB

GREAT LORD OF LORDS
for SATB and organ

IT WAS UPON THE TWELFTH DAY
carol for SATB

KINDLE A LIGHT TO LIGHTEN THE DARKNESS
carol-anthem for SATB and organ

THE LINDEN TREE
carol arranged for SATB

O GOD, WHO THROUGH THE GRACE OF THY HOLY SPIRIT
for SATB

THE GATE OF HEAVEN
12 anthems for SATB

THE SONG OF THE ANGELS
carol for SATB and organ

THE SPIRIT OF TRUTH
two anthems for SATB including Gracious Spirit, Holy Ghost
and a work by Simon Lole

ST MATTHEW PASSION
for soloists, SATB choir, congregation and organ

TO CHRIST, THE PRINCE OF PEACE
for SATB and organ

Encore Publications
Juglans House, Brenchley Road, Matfield, Kent TN12 7DT, UK
www.encorepublications.com

Epiphany Responsory

Words: cf Isaiah 60
and Christopher Smart (1722-71)

Music: RICHARD LLOYD

Freely

TENORS
& BASSES
(or Cantor)

A - rise, — shine out, for your light — has come;

Tempo comodo

S.
A.

T.
B.

and the glo - ry of the Lord — is ri - ing up - on you.

mf

The na - tions will come — to — your light,

mf

mf

and kings — to your dawn - ing bright - ness.

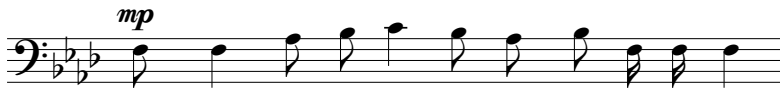
mp

They shall bring gold — and frank - in - cense,

f

f

and pro - claim — the praise — of the Lord.



Your gates will lie op - en con - tin - u - al - ly,

mp

3

3

shut nei - ther by day_ nor by night.

mp

3



No more will the sun give you day - light,

p

rall.

nor moon - light_ shine_ up - on you.

p



But the Lord_ will be your ev - er - last - ing light,

f

ten. *ff*

But the Lord_ will be_ your ev - er - last - ing light, your

f

ten. *ff*

molto allarg.

God, your God will be your splendour.

Slowly and well sustained

SOPRANOS

p
Where is this stupendous stranger? Prophets, shepherds, kings, advise:

Lead me to my Master's manger, Show me where my Saviour lies.

S. A. *p*
O most mighty, O most holy,

T. *p*

Org. *pp* célestes
Man. *tacet*

S. A.
Far beyond the seraph's thought! Art thou then so mean and lowly

T.